

i8T5-RW-M3610

NDAA/TAA
Compliant product



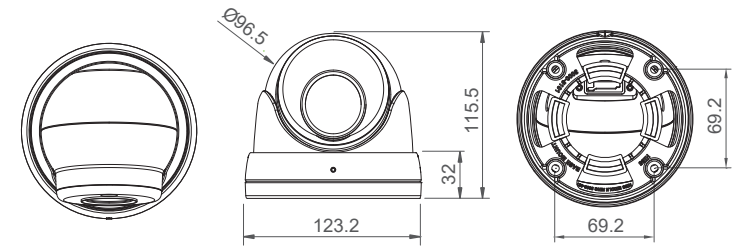
*MAGIC IP H.265 ONVIF

- 8MP (3840x2160), Dual Stream
- Video Encoding H265/ H264
- 2.7~13.5mm Motorized V/F lens
- Hi-power LED 4pcs (Hidden type LED)
- 0.01 Lux (color), WDR, 3D DNR, AWB
- 2way Audio(G711U/G711A coding), Alarm, Sensor
- IE6.0 and Above Browser/ P2P Cloud Service
- Built in SD card slot
- IP67, Turret type Dome, EASY Installation

SPECIFICATIONS

Image Sensor	1/2.8" SONY CMOS	
Resolution	3840(H) x 2160(V), 8MP	
Lens	2.7~13.7mm (F1.6) Motorized V/F lens	
LED	Hi-power 4pcs (IR Range 40M)	
Video Compression	H.265 / H.264	
Video Bit rate	CBR / VAR	
Frame Rate	Main Stream	3840*2160@20fps, 3072*2048, 2592*1944, 2560*1440, 2304*1296, 2048*1536, 1080P, 960P, 720P, D1@30fps
	Sub Stream	720*480 D1/ VGA/ 640*360/ CIF@30fps
Shutter speed	Auto / Manual	
Day & Night	Automatic, External control, Manual, Timing	
Function	3D DNR/ WDR (120dB) / BLC/ Privacy Mask, Flip mode, Saturation, Brightness, Contrast, Hue, Sharpness adjustable, AWB, Anti-face over-exposure , Defog	
Network	IE6.0 , Safari, Chrome, FireFox, Opera, Edge Browser	
Protocol	HTTP / RTSP / DHCP / NTP / ONVIF, optional GB28181, RTMP	
System Compatibility	ONVIF T v17.06 (TBD)	
Interface	RJ45	
SD Storage	max. 128GB	
Audio in/out	Support, Codec G711U/G711A	
Alarm / Sensor / PoE	Support	
Power Supply	DC12V	
Temperature/Humidity	Operating (-10~ +50°C / 30~80% RH)	

DIMENSIONS (mm)



INSTALLATION

- Place the camera base mount at the pre-drilled installation position and route the power/network cable to the connecting place.
- Fix the base mount by using mounting screws.
- Attach the ball assey and rings
- Adjust the camera's viewing angle (Pan, Tilt)
- Tighten screws with L-wrench to fix the camera.

